

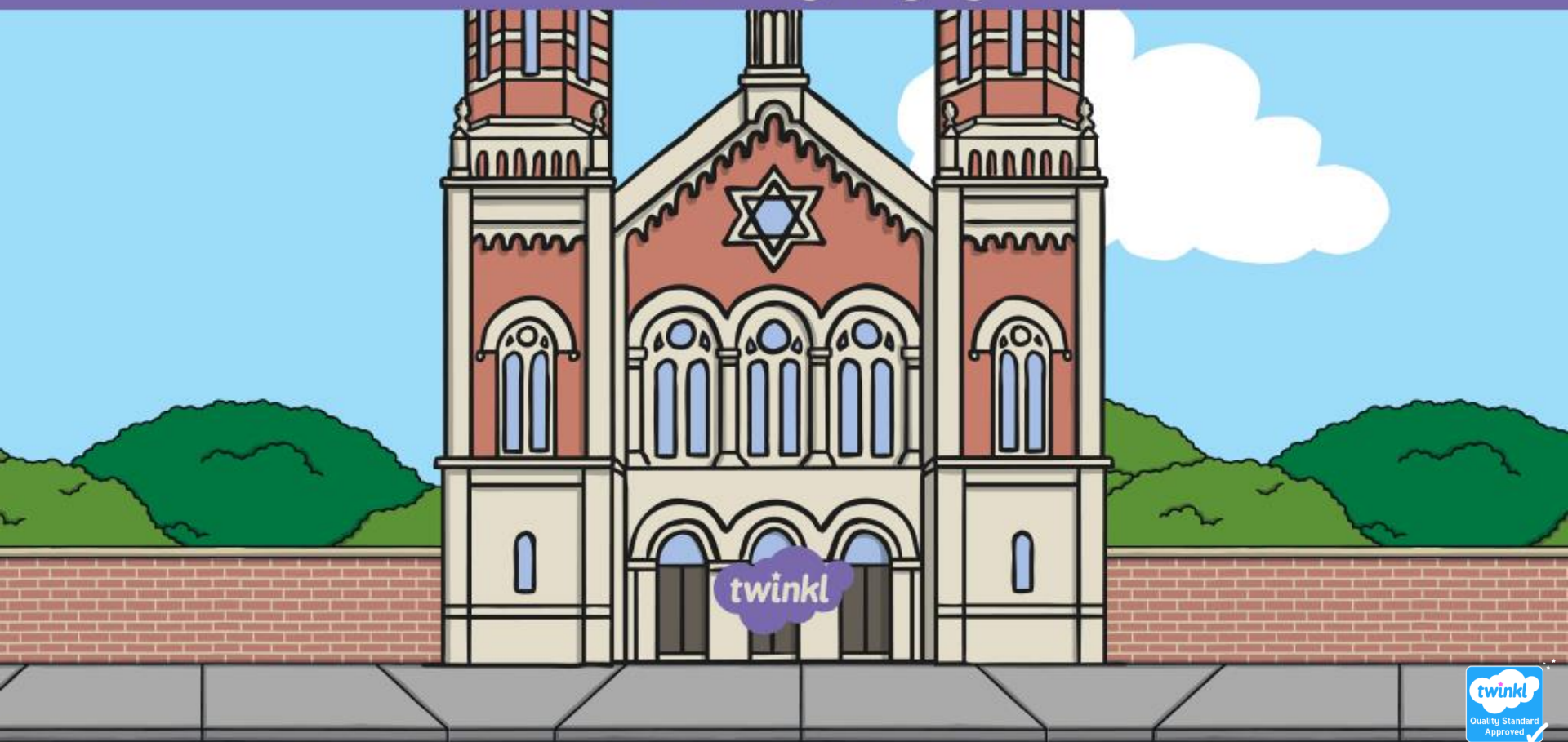


# RE

## Places of Worship

# Places of Worship

## Jewish Synagogue



# Aim

- To discuss key parts of a Jewish synagogue.

## Success Criteria

- I can explain what a place of worship is.
- I can name and talk about some important parts of a Jewish synagogue.
- I can talk about some important things that Jewish people believe.
- I can identify and name important parts and objects from a synagogue.

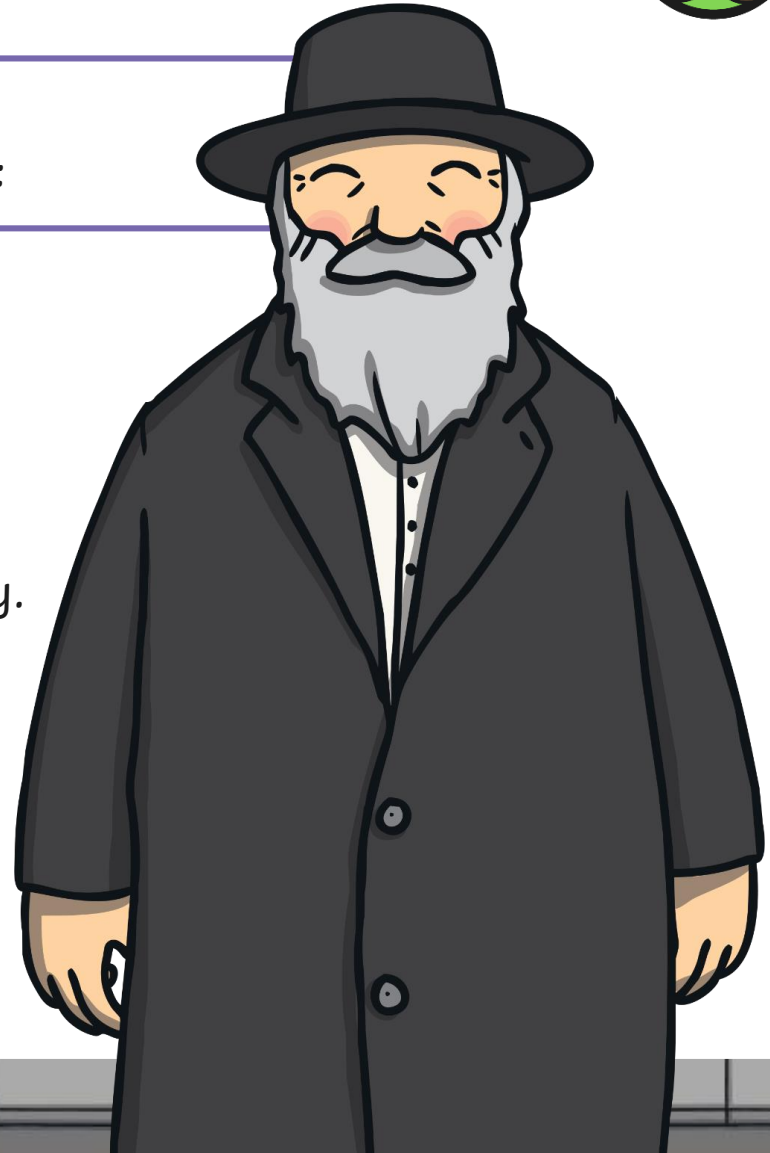
# What Is a Place of Worship?



A place of worship is a special place within a religion where believers go to:

- ✓ pray;
- ✓ worship;
- ✓ learn about their religion;
- ✓ spend time together as a community.

Here's an idea...



# Judaism



Judaism is a religion. People who follow Judaism are called Jews.

Did You Know...?



Jews think God is very holy. They think His name is so holy that it should not be written down. As a sign of respect, Jews write **G-d**.

Jews believe that God loves them and looks after them.

Jews try to follow important rules to live their lives the way they think God would like.



# Judaism



What special rules do you think Jews have?

Jews have lots of rules in their special book, the Torah. An important set of rules is the Ten Commandments.

Jews believe God gave the Ten Commandments to Moses. They try to keep all Ten Commandments throughout their lives.

**I**  
You shall have  
no gods before me

**II**  
You shall not make  
any idols to worship

**III**  
You shall not take the  
Lord's name in vain

**IV**  
Remember and keep  
the Sabbath holy

**V**  
Honour your father  
and mother

**VI**  
You shall  
not kill

**VII**  
You shall not  
commit adultery

**VIII**  
You shall not  
steal

**IX**  
You shall not bear  
false witness

**X**  
You shall not covet your  
neighbour's wife nor goods



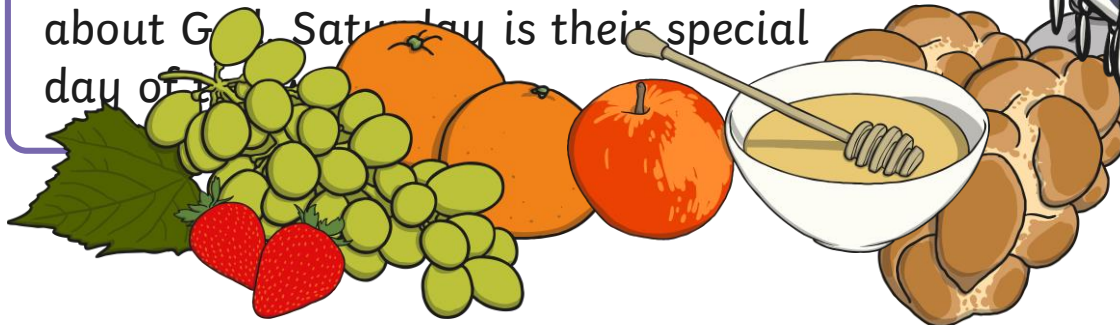
# Judaism



What special things do you think Jews do?

Jews also have special festivals through the year. At their New Year celebration, called Rosh Hashanah, a special horn is blown. Prayers are said, candles are lit and sweet foods are eaten.

together on Friday night. They light candles, say special prayers and think about God. Saturday is their special day of rest.

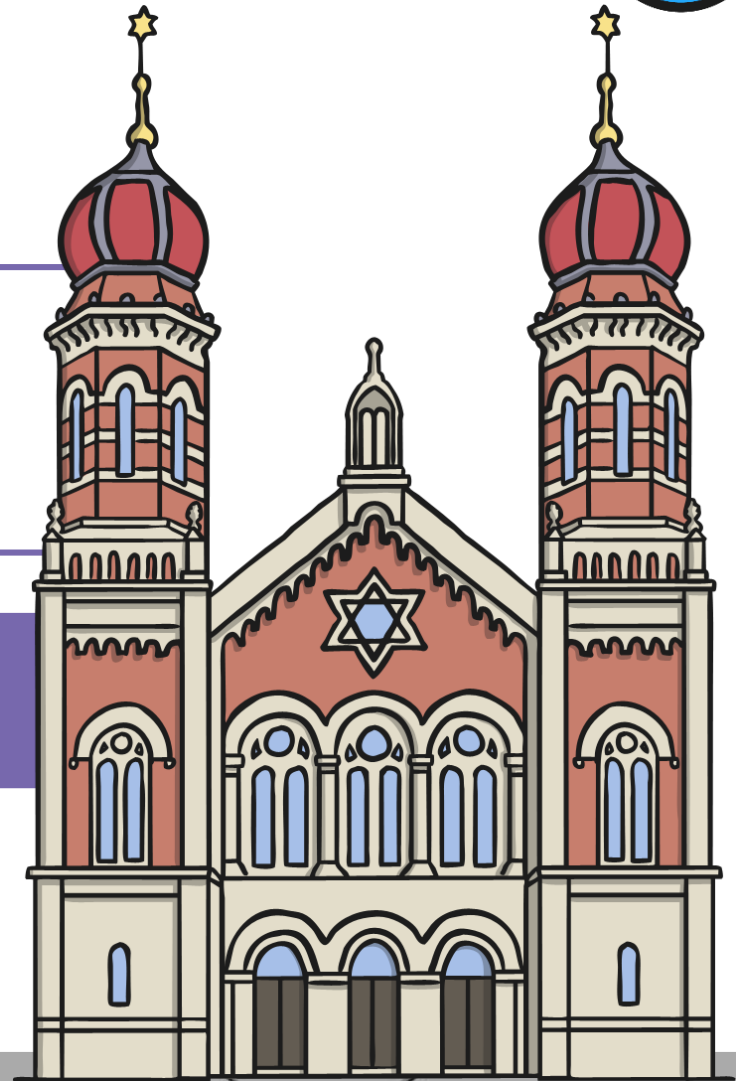


# We Might See...



Jews have a special place of worship. They go to this place to pray and worship. They also celebrate special events there.

The Jewish place of worship is called a **synagogue**.





# We Might See...



What kind of things do you think you might see in a synagogue?

Think about some of the things you now know about what Jews believe to help you. Share your ideas with a partner.

Use these words to help you:



**God**    Torah    **remember**  
candles    Ten Commandments  
community    **prayer**    **love**

# In a Synagogue



## Be quiet

for people to follow as a way of showing respect.

~~Most people in a synagogue cover their~~

~~heads. Men have a special cap called a~~

~~kippah. Over many centuries, it's~~

~~become a tradition for people to not~~

~~talk or move when in a synagogue.~~

~~It's a way of showing respect to~~

~~the people who might be~~

~~thinking in silence.~~



# In a Synagogue



## Prayer Room

This is where Jews gather to pray together. In some synagogues, men sit in a different area to the women. Men wear a special shawl, called a **tallit**, when they pray.



# In a Synagogue



## The Cantor

This person has a special place in the room to stand. They chant prayers for the rest of the people to join in with.

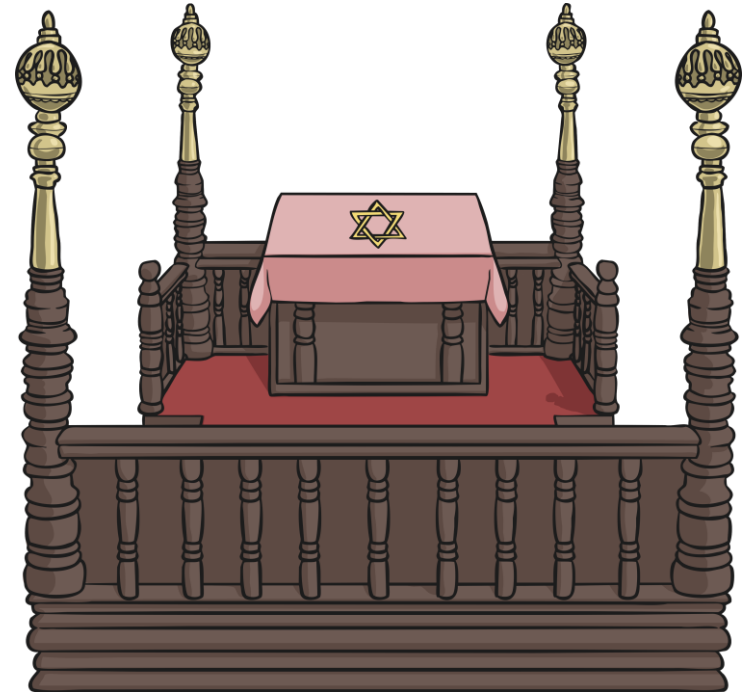


# In a Synagogue



## The Bimah

The Jewish special book is called the Torah. It is sacred to Jewish believers. The **bimah** is a raised platform where the Torah is placed when it is to be read from. This is often in the middle of the room, or at the end of the room near the **ark**. The **cantor** stands here, too.



# In a Synagogue



## The Ark

To look after their special book, every synagogue has an **ark**. This is a special place where the Torah is kept. It is often on the main wall of the synagogue and impressively decorated.



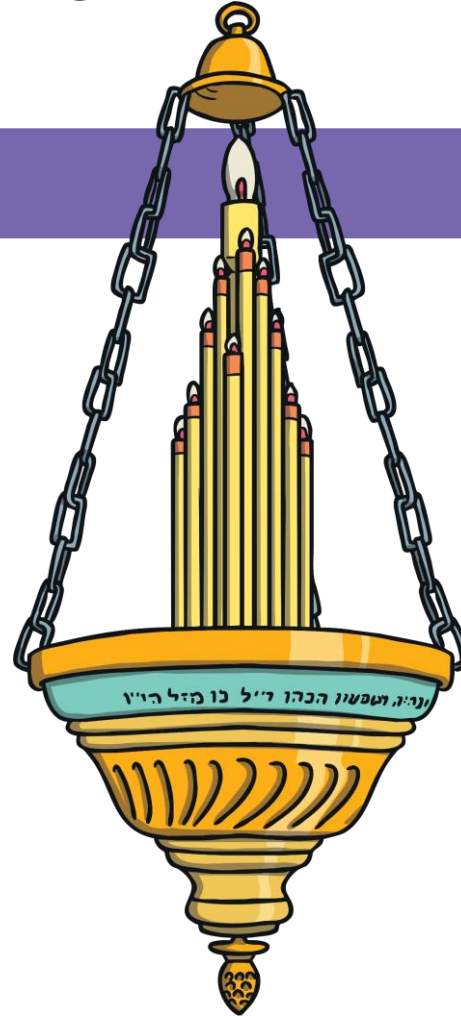


# In a Synagogue

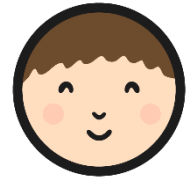


## Eternal Light

In some synagogues, there is a light above the **ark**. This is called the Eternal Light. Its name comes from a verse in the Torah which says an eternal flame should burn in the temple all the time. It is also a reminder of the candles in the Temple in Jerusalem that stayed lit, which Jews believe was a miracle of God.



# Match It Up!



How much can you remember about the things you might find in a synagogue?

Complete the **Parts of a Synagogue Matching Activity Sheet** to show much you now know about a synagogue.

★	★★	★★★	<b>Parts of a Synagogue</b>							
Can you match to the name of	How much can picture and place in the missing	Can you match the picture to its description? Cut out each picture and place it next to the description of the object it shows. Then, add labels to say what each object is.				The special place on the main wall where the Torah is kept.				
<div data-bbox="948 546 981 696" style="border: 1px solid black; height: 105px; width: 17px;"></div>	ark	<div data-bbox="1151 568 1329 625" style="border: 1px solid black; width: 92px; height: 40px;"></div>	<div data-bbox="1354 546 1508 639" style="border: 1px solid black; width: 80px; height: 65px;"></div>	The special place on the main wall where the Torah is kept.		The raised platform where the cantor stands and the Torah is placed.				
			<div data-bbox="1354 661 1508 753" style="border: 1px solid black; width: 80px; height: 65px;"></div>							
	tallit	<div data-bbox="1151 782 1329 839" style="border: 1px solid black; width: 92px; height: 40px;"></div>		<div data-bbox="1354 768 1508 861" style="border: 1px solid black; width: 80px; height: 65px;"></div>		A shawl worn by men when they pray in the synagogue.				
		<div data-bbox="1151 889 1329 946" style="border: 1px solid black; width: 92px; height: 40px;"></div>	<div data-bbox="1354 875 1508 968" style="border: 1px solid black; width: 80px; height: 65px;"></div>		A light above the ark which is always lit.					
twinkl planit	twinkl planit	twinkl planit	RE   Year 1   Places of Worship   Jewish Synagogue   Lesson 2							
<div data-bbox="865 1096 975 1239" style="border: 1px solid black; width: 57px; height: 100px;"></div>	<div data-bbox="1029 1096 1116 1182" style="border: 1px solid black; width: 45px; height: 60px;"></div>	<div data-bbox="1174 1096 1290 1182" style="border: 1px solid black; width: 60px; height: 60px;"></div>	<div data-bbox="1338 1096 1425 1182" style="border: 1px solid black; width: 45px; height: 60px;"></div>	<div data-bbox="1483 1096 1532 1182" style="border: 1px solid black; width: 25px; height: 60px;"></div>	<div data-bbox="1609 1096 1705 1182" style="border: 1px solid black; width: 50px; height: 60px;"></div>	bimah	bimah	Eternal Light	ark	tallit

# Guess the Object

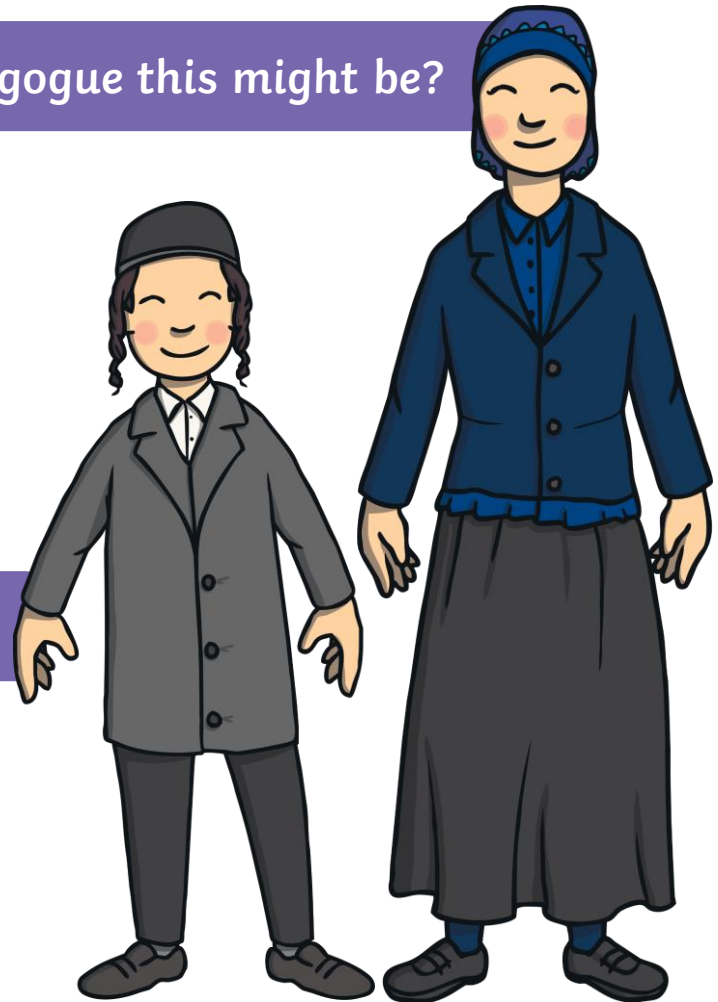


Can you guess which object from a synagogue this might be?

- ✓ I am worn by men.
- ✓ I am blue and white.
- ✓ I help show respect during prayer.



tallit – a prayer shawl



# Guess the Object



Can you guess which object from a synagogue this might be?

- ✓ I am on the main wall of the synagogue.
- ✓ I look after the Jewish special book.
- ✓ I am impressive to look at.



ark

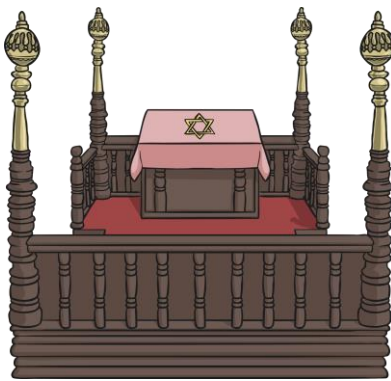


# Guess the Object



Can you guess which object from a synagogue this might be?

- ✓ I am where the cantor stands.
- ✓ I am where the Torah is placed.
- ✓ I am in the centre of the room.



**bimah**



# Aim



- To discuss key parts of a Jewish synagogue.

## Success Criteria

- I can explain what a place of worship is.
- I can name and talk about some important parts of a Jewish synagogue.
- I can talk about some important things that Jewish people believe.
- I can identify and name important parts and objects from a synagogue.



